

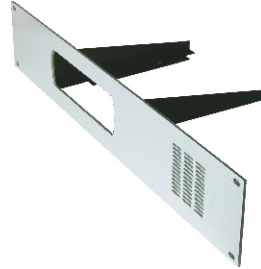
**TECHNICAL DATA SHEET  
AND  
INSTALLATION AND OPERATING INSTRUCTIONS**

**DESCRIPTION**

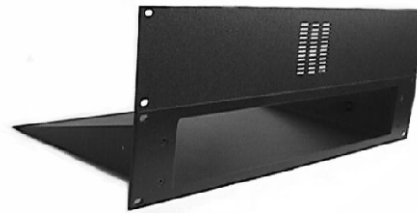
Louroe can fabricate 19" rack mount assemblies for all of its desktop audio base stations and audio-follow-video switchers. Standard dimensions are 19"W x 3½"H for all base stations and switchers except for Models AP-12TB, AP-16TB, AVS-4A and AVS-8A which require a 19"W x 7"H rack mount.



**RM-1935 RACK MOUNT ASSEMBLY**  
19" W x 3½" H



**RM-1935-APR RACK MOUNT ASSEMBLY**  
19" W x 3½" H



**RM-1907 RACK MOUNT ASSEMBLY**  
19" W x 7" H

**APPLICATION**

For rack mounting all Louroe Desktop Audio Base Stations and Audio-Follow-Video Switchers listed below in standard 19" rack assembly.

<u>FOR RACK MOUNTING MODEL:</u>	<u>REQUEST RACK MOUNT MODEL:</u>	<u>DIMENSIONS</u>
APR-1	RM-1935-APR	19"W x 3½"H
AP-2, AP-4, AP-8 AP-4TB, AP-8TB, AVS-2M	RM-1935	19"W x 3½"H
AP-12TB and AP-16TB, AVS-4A and AVS-8A	RM-1907	19"W x 7"H

**IMPORTANT: Include Louroe Base Station model number when ordering.  
Please allow ten working days for fabrication.**



**WARRANTY**

LOUROE ELECTRONICS warrants that at the time of shipment products manufactured by LOUROE ELECTRONICS to be free of defects in material and workmanship. Should a defect appear within one year (12 months) from date of shipment, LOUROE ELECTRONICS will, at its sole discretion, repair or replace the defective equipment. This equipment shall not be accepted for repair or return without prior notification by LOUROE ELECTRONICS.

This warranty does not extend to any Louroe product that has been subjected to improper or incorrect installation, misuse, accident, or in violation of installation instructions provided by LOUROE ELECTRONICS.

Returned shipments to LOUROE ELECTRONICS shall be at customer's expense. LOUROE ELECTRONICS will return the equipment prepaid via best way.