

# Quick Setup Guide

## Speco Technologies NS Series NVRs

Please go to [www.specotech.com/software-updates.html](http://www.specotech.com/software-updates.html) for the latest software

**Congratulations** on purchasing your new NS NVR. We hope that this Quick Setup Guide will help you quickly setup and configure your new Speco Technologies NVR.

Thank you!

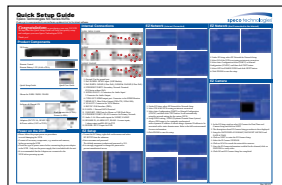
### Product Components

#### NS Series



#### Remote Control

Remote Battery 1.5V (AAA x 2EA)



Quick Setup Guide



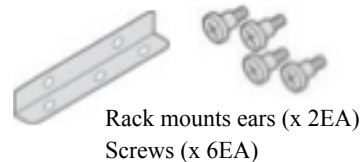
User Guide

#### Mouse for N4NS, N8NS, N16NS

N4NSP, N8NSP, N16NSP



#### Software & Manual CD



Rack mounts ears (x 2EA)  
Screws (x 6EA)

#### Adaptors (DC12V 5A, DC48V 2A), Power cables (110V or 220V) & Audio cable (N8NSP, N16NSP)

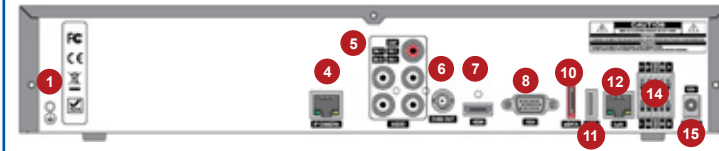


### Power on the DVR

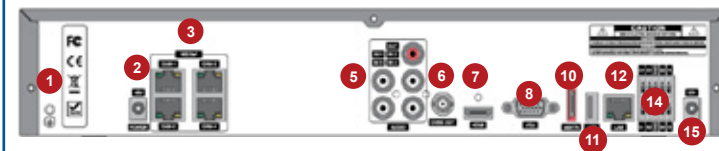
- Please follow the proper power on procedures to avoid damaging the NVR.
- Connect all necessary components, e.g. monitor and cameras, before powering the NVR.
- Check the type of power source before connecting the power adaptor to the NVR. Only use the power supply that is included with the unit.
- It is recommended that the Adaptors are connected to the NVR before powering up unit.

### Internal Connections

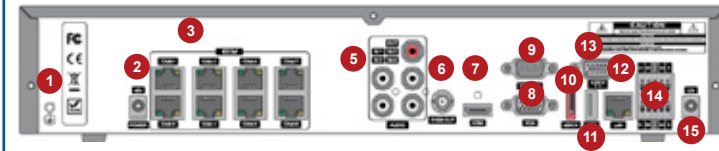
#### N4NS, N8NS, N16NS



#### N4NSP



#### N8NSP, N16NSP



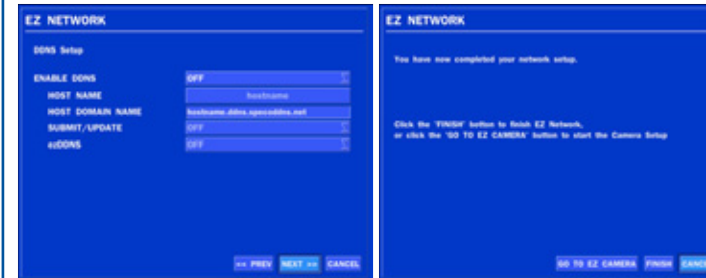
1. Ground: Use for ground port.
2. PoE POWER: DC48V input. (NSP Models)
3. PoE PORTS: N4NSP (4 Port PoE), N8NSP & N16NSP (8 Port PoE)
4. ETHERNET PORT2: Secondary Network Terminal. (NS Series without PoE)
5. AUDIO IN/OUT: 4 Connectors for Audio Input / 1 Connector for Audio Output.
6. CVBS OUT: HDMI output port. Connector to the HDMI Monitor.
7. HDMI OUT: Main Video Output (1280x720, 1920x1080).
8. VGA OUT: Connector for VGA Monitor.
9. RS232C: POS Interface (TBD).
10. E-SATA: 1 External SATA Terminal.
11. USB PORT: USB Ports for Mouse or USB Flash Drive .
12. ETHERNET PORT1: RJ-45 Connector for Primary Network.
13. Audio 5~16: More audio inputs for N8NSP, N16NSP.
14. SENSOR IN, ALARM OUT, RS-485: 4 sensor inputs; 1 alarm output and RS-485 for PTZ.
15. POWER: DC12V input for NVR.

### EZ Setup

- To start the EZ Setup, right click on the mouse and select EZ SETUP from the submenu.
- Enter username and password.  
The default username is admin and password is 1111.
- It is strongly suggested to change the password to prevent unauthorized access.



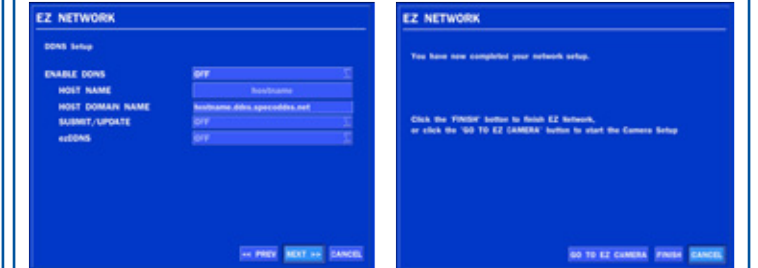
### EZ Network (Internet Connected)



1. Under EZ Setup, select EZ Network for Network Setup
2. Select YES if the NVR is using an internet connection.
3. Select Auto Configuration (DHCP) or Manual Configuration (STATIC) and then click TEST button. It will automatically setup the network setting for the system (NVR).
4. Setup DDNS setting. DDNS (Dynamic Domain Name System) allows a DNS name to be constantly synchronized with a dynamic IP address. It allows using a dynamic IP address to be associated with a static domain name. Refer to the full version manual for more information.
5. Click FINISH to save the setup.

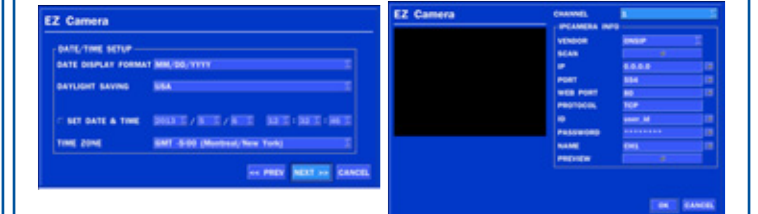


### EZ Network (Not Connected to the Internet)



1. Under EZ Setup, select EZ Network for Network Setup
2. Select NO if the NVR is not using an internet connection.
3. Select OFF for ENABLE DDNS and click NEXT button.
4. Click FINISH to save the setup.

### EZ Camera



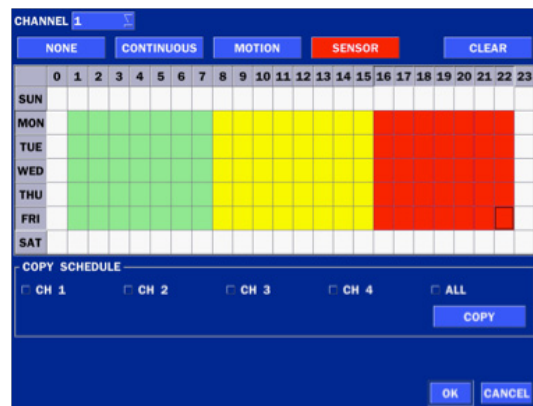
1. In the EZ Setup window, select EZ Camera for Date/Time and Camera Setup and click on NEXT.
2. The description about EZ Camera Setup procedure is then displayed.
3. Setup the DATE DISPLAY FORMAT, DAYLIGHT SAVINGS and DATE & TIME.
4. Click on NEXT to enter the EZ Camera Setup.
5. Select the IP Camera VENDOR
6. Click on SCAN to search the network for cameras.
7. Once the IP Camera information is added for the channel, click on PREVIEW to verify video
8. Click OK and EZ Camera Setup has completed.

# Quick Setup Guide

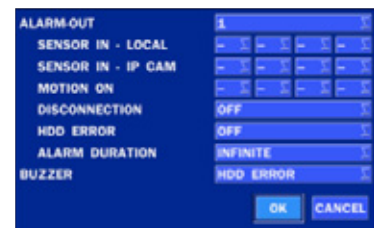
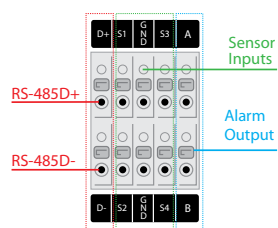
Speco Technologies NS Series NVRs

## Recording Setup

- To setup a recording schedule, select SCHEDULE in the RECORD menu.
- Select CHANNEL > select NONE, CONTINUOUS, MOTION, or SENSOR > Highlight area for recording setting.
- To copy a schedule to a different channel, select the desired channel from the COPY SCHEDULE menu and click COPY.



## Pin Definition of Alarm I/O & RS-485



## Alarm I/O Setup

- In the SETUP menu, select the DEVICE tab and click on ALARM-OUT.
- Set the sensor, motion, and video loss for triggering alarm relay output.
- HDD Error and Video Loss can also trigger beeping.

## Network Setup



Select the NETWORK tab.

- For DHCP, set the Network Type to DHCP and exit from the setup. The IP address, Subnet Mask, Gateway and DNS settings are retrieved from network servers. DHCP is dynamic and the settings will change from time to time.

- For Static, set the Network Type to Static. Enter the IP address, Subnet Mask, Gateway and DNS. Obtain this information from the network service provider.
- The Client Access must be ON for the NVR to be accessed remotely.
- To enable DDNS for free, Enter the NVR Name and DDNS server name.

## IP Camera Setup



Select the IP Camera tab.

CHANNEL : Select the Channel to setup an IP Camera  
 VENDOR : Select the Brand of the Camera  
 SCAN : Automatically search the network for IP Cameras  
 IP : Enter the IP Address of the desired Camera  
 PORT : Enter the Camera stream Port Number (Default : 554)  
 WEB PORT : Enter the Camera Web Port Number (Default: 80)  
 PROTOCOL : Select a Protocol (Default: TCP)  
 ID : Enter the User ID for access to the IP Camera  
 PASSWORD : Enter the Password for the associated ID

## Connect the NVR via Web-Browser Viewer

Setup Instructions:

- Make sure PC is connected to the Internet.
- Make sure NVR is setup using the steps in Network Setup section.
- Start Internet Explorer; go to 'Tools' → 'Internet Options' → 'Security' tab.
- Select 'Trusted sites' and click 'Sites' to specify its security setting.
- Enter the IP address of the NVR in this in this zone.
- In the Security Level area, click 'Custom Level'. Under 'ActiveX controls and plug-ins', set all items to 'Enable' or 'Prompt'.
- Click 'OK' to accept the settings and close the 'Security Settings' screen. Obtain Network Information of the NVR.



- Obtain the local IP address from System Information from the Sub Menu. To get global IP address, contact network administrator or service provider.
- In the SETUP menu, select the SYSTEM tab and enable CLIENT ACCESS.
- In the SETUP menu, select the NETWORK tab, obtain the network and web port number.
- Start Internet Explorer and enter the IP address and web port of the NVR.- For example: http:// [ip address] : [web port] → http://172.16.2.62:80

## Connect the NVR via Web-Browser Viewer continued

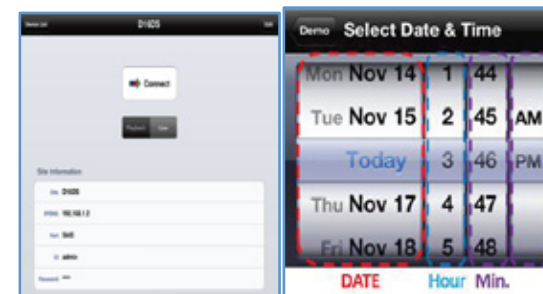
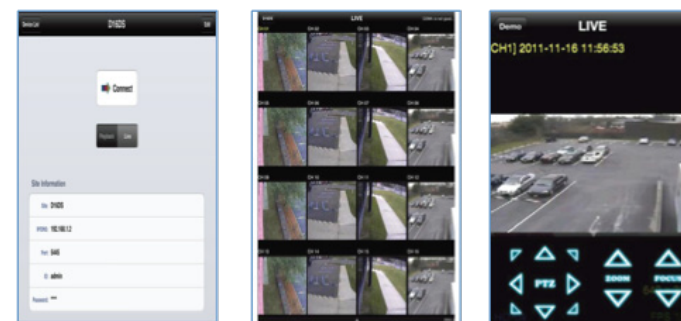
- The ActiveX controls and plug-ins dialog will be prompted for installation.
- Install the plug-ins.
- Click on 'Connect' and enter the username, password, and network port of the NVR.
- The default usernames/ passwords are admin / 1111 and user1 / 1111.
- The default network port is 5445.

## Mobile View Software

The NS provides mobile surveillance software for both the iPhone and the Android™.

### iPhone® / iPad®

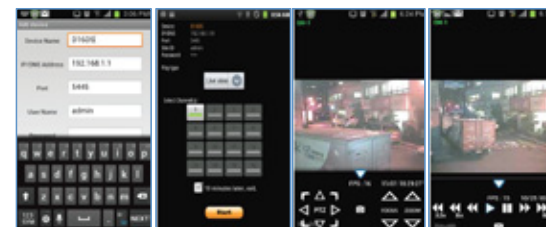
- Search for 'Speco Player' in the Apple iTunes Store and install the app.



- Press (+) on the upper right and enter site information.
- Click SAVE to save the site information.
- Select the saved site from "Devices"
- Select a channel(s) to view.
- Select Playback/Live then click CONNECT

### Android™

- Search for 'Speco Player' in the Google Play Store and install the app.

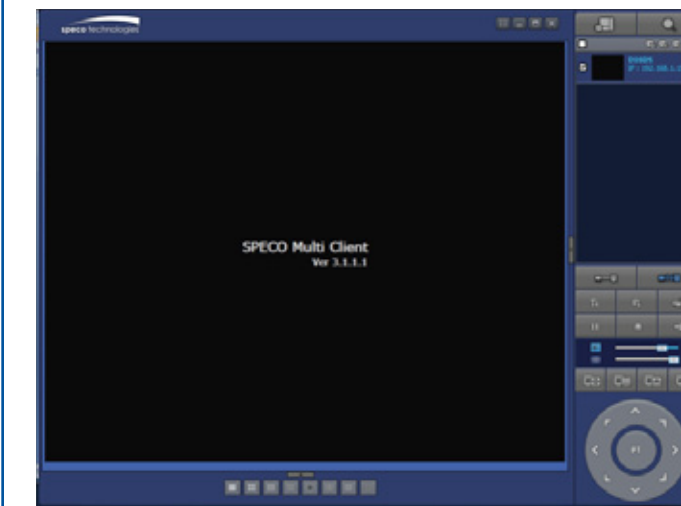


- Select the ADD menu and enter site information.
- Click ADD to save the site information.

## Mobile View Software continued

- Select the saved site from "Devices" for network connection.
- Select a channel and select Live view or Playback.
- Click on START button.

## Connect the NVR via SpecoTech Multi-Client Viewer Software



SpecoTech Multi-Client Viewer Software is a multiple site monitoring client software that allows streaming of video and audio, and transmission of alarm signals from the NVRs over the network. The SpecoTech Multi-Client can display up to 16 NVRs and supports dual monitors.

PTZ camera control is also supported by this software. By attaching a microphone and speaker system to devices on site, the user may make bi-directional audio communication over the network. Refer to the complete manual for more information.

**The SpecoTech Multi-Client Viewer Software and manual are included on the CD.**