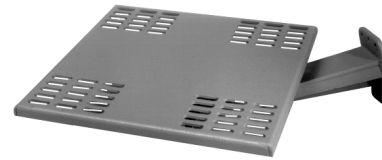


MM1000 Mount

WALL, MONITOR

Product Features

- Low Cost
- Supports up to 40 lb (18 kg)
- Designed for 9-Inch (22.86 cm) and 12-Inch (30.48 cm) CCTV Monitors
- Universal Monitor or Wall Mounting
- Attractive, Unobtrusive Design
- Lightweight for Fast, Easy Installation

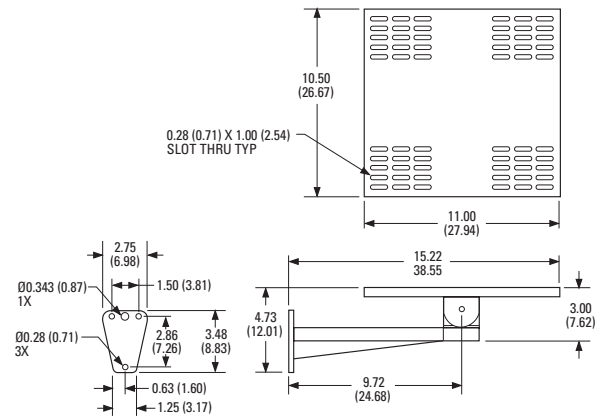


MM1000

The **MM1000** is a universal monitor mount constructed from aluminum and capable of supporting a 9-inch (22.86 cm) or 12-inch (30.48 cm) monitor weighing up to 40 pounds (18 kg). The **MM1000** mounts to a wall or vertical surface.

The universal mounting head allows the **MM1000** to adapt to most 9-inch (22.86 cm) or 12-inch (30.48 cm) CCTV monitors. Support pan extension brackets are provided to accommodate monitors with slightly different hole patterns or rubber feet. Horizontal and vertical adjustments allow you to position the monitor.

In addition, the **MM1000** can be adapted for mounting on a pole when used with the PA101 pole mount. A 3-inch (7.62 cm) to 8-inch (20.32 cm) diameter pole is required.



MM1000

NOTE: VALUES IN PARENTHESES ARE CENTIMETERS; ALL OTHERS ARE INCHES.



TECHNICAL SPECIFICATIONS

MODEL

MM1000 Wall mount for 9-inch (22.86 cm) and 12-inch (30.48 cm) CCTV monitors

MECHANICAL

Pan Adjustment Unlimited 360°
Tilt Adjustment +10°, -90°
Monitor Mounting Multiple slotted holes in monitor support pan (4 mounting screws required, not supplied)
3/8-16 Allen bolts
Locking Method
Mounting Method Secure to wall or horizontal surface as noted:
MM1000 3, 1/4-20 fasteners or one 1/4-inch diameter and one 5/16-inch diameter fastener for center mount holes in applications where wall studs are encountered

GENERAL

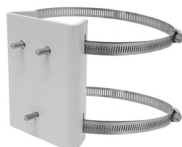
Construction Aluminum
Finish Gray polyester powder coat
Maximum Load 40 lb (18 kg)
Unit Weight
MM1000 2.76 lb (1.25 kg)
PA101 0.88 lb (0.40 kg)
Shipping Weight
MM1000 4 lb (1.81 kg)
PA101 2 lb (0.90 kg)

CERTIFICATIONS

- UL Listed

OPTIONAL MOUNT ADAPTERS

PA101 Pole mount adapter for MM1000.
Fits poles with 3-inch (7.62 cm) to 8-inch (20.32 cm) diameters. Stainless steel mounting straps supplied



PA101



Pelco, Inc. Worldwide Headquarters:
3500 Pelco Way, Clovis, California 93612-5699 USA
USA & Canada Tel: (800) 289-9100 • FAX: (800) 289-9150
International Tel: +1 (559) 292-1981 • FAX: +1 (559) 348-1120
www.pelco.com

Pelco and the Pelco logo are registered trademarks of Pelco, Inc.
Product specifications and availability subject to change without notice.
©Copyright 2008, Pelco, Inc. All rights reserved.