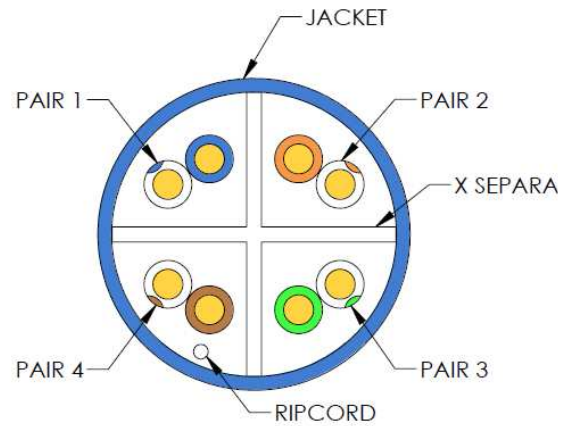
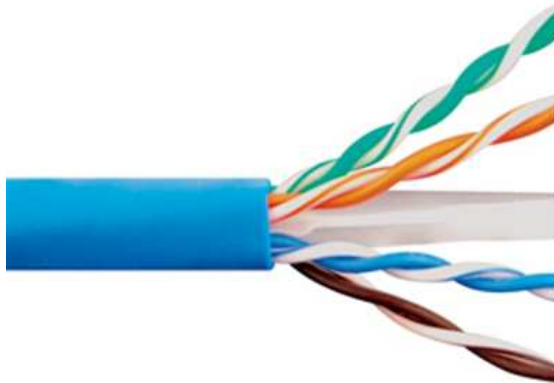


CATEGORY 6 600 UTP CMP SOLID CABLE

Package Includes

A. Category 6 UTP CMP Solid Cable, 1000 feet



PAIR 1: BLUE; WHITE/BLUE
 PAIR 2: ORANGE; WHITE/ORANGE
 PAIR 3: GREEN; WHITE/GREEN
 PAIR 4: BROWN; WHITE/BROWN

Features and Benefits

- Exceeds TIA 568-C.2 Category 6 standard
- Easy to dispense cable with Reelex design box, saving your time and energy on the job site
- Convenient sequential footage markings for usage tracking
- UL verified for guaranteed +5dB over ANSI/TIA-568-C.2 standard performance requirements: NEXT (min), PSNEXT (min), ELFLEXT (min), PSELFLEXT (min)
- UL listed for plenum (CMP) applications

ITEM NUMBER	DESCRIPTION	UPC NUMBER
ICCABP6EBL	C6E 600 UTP SLD CBL, 23G, 23G, 4P, CMP, 1K BL	6 33758 02986 5
ICCABP6EGN	C6E 600 UTP SLD CBL, 23G, 23G, 4P, CMP, 1K GN	6 33758 03750 1
ICCABP6EGY	C6E 600 UTP SLD CBL, 23G, 23G, 4P, CMP, 1K GY	6 33758 03002 1
ICCABP6EWH	C6E 600 UTP SLD CBL, 23G, 23G, 4P, CMP, 1K WH	6 33758 03004 5
ICCABP6EYL	C6E 600 UTP SLD CBL, 23G, 23G, 4P, CMP, 1K YL	6 33758 03006 9

Specifications

NOTE: UNLESS OTHERWISE SPECIFIED

1. STANDARD:

- A. ANSI/TIA 568-C.2
- B. ANSI/TIA 862 (BUILDING AUTOMATION)
- C. ISO/IEC 11801 Ed. 2.0 (CLASS E)
- D. ICEA S-102-700 (CATEGORY 6)
- E. NEC/CEC Type CMP (NFPA 262)
- F. ROHS COMPLIANT DIRECTIVE 2002/95/EC
- G. UL 444

2. CONSTRUCTION:

- A. CONDUCTOR: 23 AWG SOLID BARE ANNEALED COPPER
- B. JACKET: LOW-SMOKE, FLAME-RETARDANT PVC
- C. INSULATION: FLUOROPOLYMER
- D. OUTER DIAMETER (IN): 0.225"

3. ELECTRICAL & PHYSICAL PROPERTIES:

- A. DC RESISTANCE (MAX) OHMS/100 M (328 FT) @ 20°C: 8.9
- B. DC RESISTANCE UNBALANCE (MAX) INDIVIDUAL PAIR %: 3.0
- C. DELAY SKEW (MAX) NS/100M: 35
- D. NOM. VELOCITY OF PROPAGATION (NVP) % SPEED OF LIGHT: 70%
- E. CHARACTERISTIC IMPEDANCE FREQUENCY (F): 1-500 MHZ: 100 ± 15 OHMS

CATEGORY 6 600 UTP CMP CABLE ELECTRICAL PERFORMANCE (100 METER LOOP)								
FREQUENCY (MHz)	INSERTION LOSS MAX. (dB/100M)	RETURN LOSS MIN. (dB)	PS NEXT MIN. (dB)	NEXT MIN. (dB)	ACR* MIN. (dB)	PSACR* MIN. (dB)	ACRF MIN. (dB/100M)	PS ACRF MIN (dB/100M)
1	2	20	77.3	79.3	77.3	75.3	72.8	69.8
4	3.8	23.6	68.3	70.3	66.5	64.5	60.8	57.8
10	6	26	62.3	64.3	58.3	56.3	52.8	49.8
16	7.6	26	59.2	61.2	53.7	51.7	48.7	45.7
20	8.5	26	57.8	59.8	51.3	49.3	46.8	43.8
31.25	10.7	25	54.9	56.9	46.2	44.2	42.9	39.9
62.5	15.4	23.5	50.4	52.4	37	35	36.9	33.9
100	19.8	22.5	47.3	49.3	29.5	27.5	32.8	29.8
150	25.2	21.6	44.4	46.4	21.3	19.3	29	26
200	29	21	42.8	44.8	15.8	13.8	26.8	23.8
250	32.8	20.5	41.3	43.3	10.5	8.5	24.8	21.8
350	39.8	19.8	39.1	41.1	--	--	21.9	18.9
500	48.9	19	36.8	38.8	--	--	18.8	15.8
550	51.8	18.8	36.2	38.2	--	--	18	15
600	54.5	18.6	35.6	37.6	--	--	17.2	14.2

For warranty information, go online to icc.com/warranty.

Part No: ICCABP6EXX Rev: G

Part Number: ICCABP6EXX

Rev: G

Page 2 of 2

888-ASK-4ICC icc.com csr@icc.com

