

HIKVISION

DS-2DY9188-AI2: PTZ Security Camera

General Information/Key Features

- UPC: 0813908027648
- UNSPSC: 46171610
- Harmonization Code: 8525805050
- Country of Origin: US
- Product Line: Darkfighter

Related Pages (Right click to open in new tab)

Shop Now. Visit the [DS-2DY9188-AI2](#) product page for detailed information

View [other Hikvision PTZ Security Cameras](#)

View over 1300 [video surveillance products from Hikvision](#)

Scroll down to view the Hikvision DS-2DY9188-AI2 specification sheet



HIKVISION
DS-2DY9188-AI2

<https://www.surveillance-video.com> is a distributor/reseller of over 120,000 security products from over 100 brands.

For over 45 years, we have earned the confidence of our customers by providing professional service and support.

If you need technical support or assistance to install your security system or any other products purchased from Surveillance-video.com, you can call us @ **800-955-5201** at any time.

DS-2DY9188-AI2

2 MP 36x IR Ultra-Low Illumination Positioning System

DARKFIGHTER 

- 1/1.9" Progressive Scan CMOS Sensor
- 1920 × 1080 Full HD Output
- Up to 656 ft (200 m) IR Range
- Wide Movement Range
- 36x Optical Zoom, 16x Digital Zoom
- Up to 655 ft (200 m) IR Distance
- True Day/Night, True WDR, 3D DNR, Defog
- 3D Intelligent Positioning
- Triple Stream
- Audio/Alarm I/O
- Wiper for Self-Cleaning



The Hikvision Darkfighter Series DS-2DY9188-AI2 2 MP 36x Low Illumination Positioning System is able to capture high quality images in dim light environments. The embedded 1/1.9" progressive scan CMOS chip makes true WDR and 2 MP real-time resolution possible.

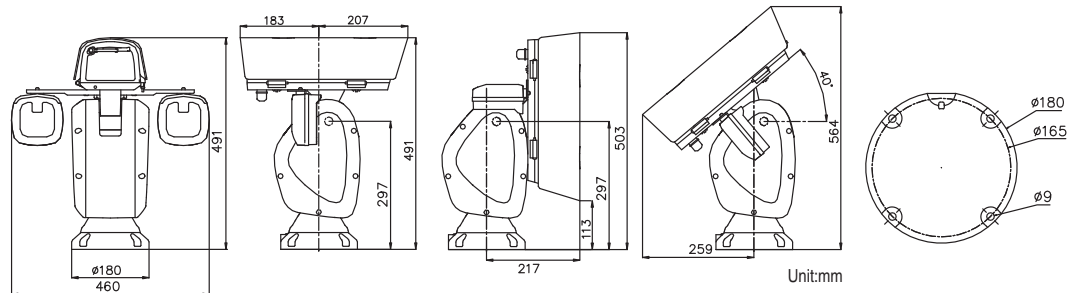
A 36x optical zoom (16x digital zoom) Day/Night lens provides this positioning system more details over expansive areas. Ultra-low

illumination requirements (color: 0.002 lux @ f/1.5, AGC on) further enhances image quality.

Hikvision Darkfighter Series DS-2DY9188-AI2 2 MP 36x Low Illumination Positioning System also features Smart defog, which can further improve image quality in challenging conditions.

Available Models: DS-2DY9188-AI2

Accessories



Dimensions



DS-2DY9188-AI2	
Camera Module	
Image Sensor	1/1.9" progressive scan CMOS
Max. Image Resolution	1920 x 1080
Minimum Illumination	Color: 0.002 lux @ f/1.5, AGC on); B/W: 0.0002 lux @ f/1.5, AGC on
Day/Night	ICR
Focus Mode	Auto/semiautomatic/manual
Shutter Speed	50 Hz: 1/1 to 1/30,000s; 60 Hz: 1/1 to 1/30,000s
S/N Ratio	>52 dB
Digital Zoom	16x
White Balance	Auto/manual/ATW/indoor/outdoor/daylight lamp/sodium lamp
AGC	Auto/manual
Lens	
Focal Length	5.7 mm to 205.2 mm, 36x
Angle of View	58.7° to 2.0° (wide to tele)
Min. Working Distance	10 mm to 1500 mm (wide to tele)
Aperture Range	f/1.5 to f/3.4
Image	
Main Stream	50 Hz: 25 fps (1920 × 1080), 25 fps (1280 × 960), 25 fps (1280 × 720) 60 Hz: 30 fps (1920 × 1080), 30 fps (1280 × 960), 30 fps (1280 × 720)
Sub Stream	50 Hz: 25 fps (704 × 576), 25 fps (352 × 288), 25 fps (176 × 144) 60 Hz: 30 fps (704 × 480), 30 fps (352 × 240), 30 fps (176 × 120)
Third Stream	50 Hz: 25 fps (1920 × 1080), 25 fps (1280 × 960), 25 fps (1280 × 720), 25 fps (704 × 576), 25 fps (352 × 288), 25 fps (176 × 144) 60 Hz: 30 fps (1920 × 1080), 30 fps (1280 × 960), 30 fps (1280 × 720), 30 fps (704 × 480), 30 fps (352 × 240), 30 fps (176 × 120)
Image Compression	H.264 (baseline, main, high profile)/MJPEG/MPEG4
Audio Compression	G722.1/G.711ulaw/G.711alaw/MP2L2/G.726/PCM
SVC	Supported
Protocols	IPv4/IPv6, HTTP, HTTPS, 802.1x, QoS, FTP, SMTP, UPnP, SNMP, DNS, DDNS, NTP, RTSP, RTP, TCP, UDP, IGMP, ICMP, DHCP, PPPoE
Standards	ONVIF, PSIA, CGI, Genetec
Others	Defog, EIS, privacy mask, 3D DNR, BLC, true WDR
Smart Features	
Smart Detection	Face detection, intrusion detection, line crossing detection, audio exception detection, region entrance detection, region exiting detection
ROI Encoding	24 areas with adjustable levels
Infrared	
IR Distance	656 ft (200 m)
IR Intensity	Automatically adjusted, depending on the zoom ratio
Smart IR	Supported
Pan and Tilt	
Movement Range	Pan: 360° endless, tilt: +40° to -90°
Movement Speed	Pan: 0.1° to 100°/s, tilt: 0.1° to 40°/s
Number of Presets	300
Patrols	8 patrols, up to 32 presets per patrol
Patterns	4 patterns, with the recording time not less than 10 minutes per pattern
Power-Off Memory	Supported
Park	Supported
Proportional Zoom	Supported
PTZ Position Display	On/Off
System Integration	
Menu	English
3D Positioning	Supported
Preset Freezing	Supported
Scheduled Task	Supported
Alarm I/O	7 alarm inputs, 2 alarm outputs, alarm linkage
Alarm Actions	Preset/patrol/pattern/SD card recording/aux output/e-map on client
Audio I/O	1/1
Ethernet	10Base-T/100Base-TX, RJ-45 connector
CVBS Output	1.0 V _{p-p} /75Ω, NTSC (or PAL) composite, BNC
RS-485	Half duplex, HIKVISION, Pelco-P, Pelco-D, self-adaptive
On-Board Storage	Built-in microSD/SDXC card slot, up to 128 GB, Edge recording
Simultaneous Live Views	Up to 20
User/Host Levels	Up to 32 users, 3 levels: administrator, operator, and user
General	
Power	24 VAC, maximum 60 W
Working Temp/Humidity	-40° C to 65° C, humidity 90% or less
Protection Levels	IP66 standard, TVS 6,000 V lightning protection, surge protection, and voltage transient protection
Dimensions	7" x 19" x 15" (180 mm x 491 mm x 390 mm)
Weight (approximate)	33.07 lb (15 kg)