

Network Video Recorder Quick Start Guide

Note: Please read this instruction carefully for correct use of the product and preserve it for reference purposes. All the examples and pictures used here are for reference only. There may be several technically incorrect places or printing errors in this manual. The updates will be added into the new version of this manual. The contents of this manual are subject to change without notice. This device should be operated only from the type of power source indicated on the marking label. The voltage of the power must be verified before using the same.

1. Packing Check

Please check the device and the accessories after getting the device. If there are any damages, shortages or defects, please contact your dealer immediately.

2. HDD Installation

This series of the product supports 8 SATA hard drives. Please make sure that the device is powered off before the installation.



1. Remove the cover and loosen the screws to take out two mounting bars.
2. Screw the shorter pillar attached with the NVR into the bottom of the device.
3. Install back the lower mounting bar and tighten the screws of the lower HDD.

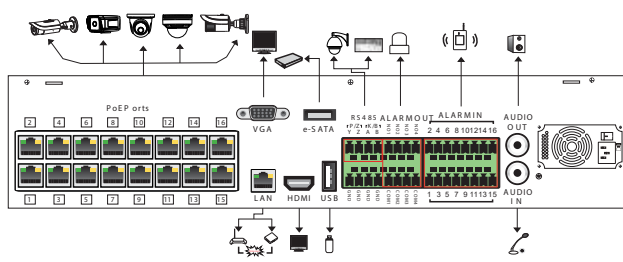


4. Connect the power and data cables and install the other three HDDs according to above-mentioned method.
5. Screw the longer pillar into the lower mounting bar.
6. Install back the upper mounting bar and tighten the screw of the pillar.



7. Install the upper four HDDs and install back the cover.

3. Rear Panel Installation



The interfaces of the rear panel are for reference only.

4. Startup & Shutdown

• Startup

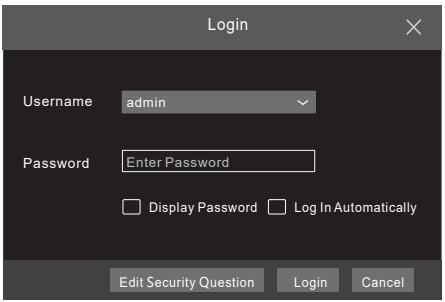
1. Connect the monitor and the power.
2. The device will boot and the power indicator will display blue.
3. A wizard window will pop up.

• Shutdown

Go to "Main Menu" and then select "Shutdown" icon. This will bring up a shutdown window. The device will shut down by clicking "OK" button. Then disconnect the power.

4. Login

For our HN500 series NVRs, the **default username is admin** and the **default password is 123456**. When starting HN500 series NVR for the first time, you will see a prompt to begin a startup wizard. You can skip this wizard if you would like, but it will help you configure basic settings for your NVR. The wizard may allow you to also change the default password for better security. If you decide to skip the wizard, to access the live view and start using your NVR click on the Start button in the bottom left of the menu bar on the bottom of the screen and then click on Login and enter in the default password.



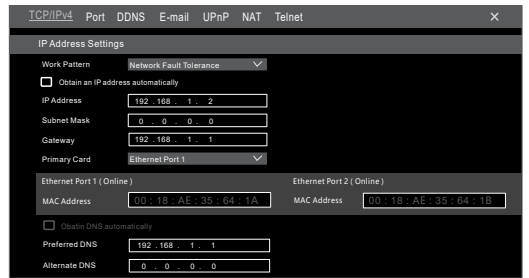
5. Network Configuration

After you finish adding IP cameras, you can see the live images through the monitor of the NVR. The following will mainly introduce how to add the IP cameras via LAN/WAN. This NVR has two network ports, you can select the network work pattern as required. Network fault tolerance and multiple address setting are optional.

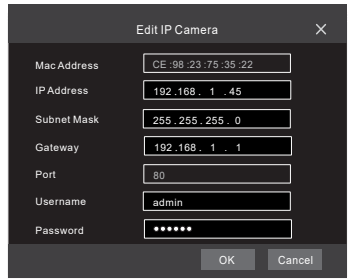
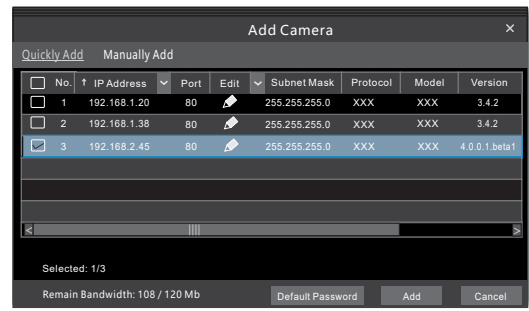
After you finish adding IP cameras, you can see the live images through the monitor of the NVR. The following will mainly introduce how to add the IP cameras via LAN/WAN.

• LAN

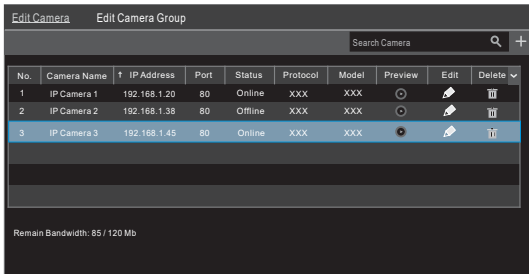
1. Set the network of the NVR. Go to Start → Settings → Network → TCP/IPv4. Input IP address, subnet mask, gateway, etc. If using DHCP, please enable DHCP in both the NVR and the router.
2. Go to Start → Settings → Network → Port. Input HTTP port (the default value is 80), server port (the default port is 6036).
3. Click "Apply" to save the settings.



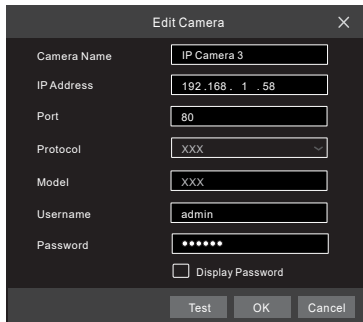
4. Go to Start → Settings → Camera → Add Camera. The NVR will automatically refresh the cameras searched. The IPC which supports the Onvif protocol may be added manually. If the IPC searched is not in the same local network as the NVR, you should select the device and click [edit icon] to modify the IP address.



- Checkmark the device you want to add and then click "Add" button. The NVR will automatically refresh the cameras and return to "Edit Camera" interface. "Online" status means connecting the device successfully and you will see the live image. You may select the added device and click button to modify channel, IP address, ect.



You may select the added device and click button to modify channel, IP address, etc.



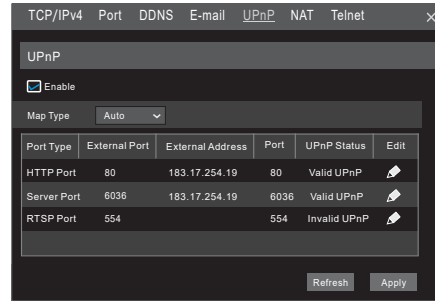
• WAN

- Set the network of the NVR. Go to Start → Settings → Network → TCP/IPV4. Input static IP address or enable PPPoE and then input the user name and password received from your ISP.
- Go to Start → Settings → Camera. Click "Add Camera" or behind the column of the search camera and select "Manually Add" to add the IP cameras. Input IP address, server port, username and password of the IP camera. The IP camera must be connected over WAN. And here the IP address of the IP camera must be a WAN IP address.

6. UPnP

You can use the UPnP function to enable the fast connection of the device to WAN via a router without port mapping.

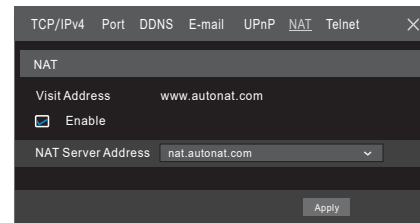
- Go to Start → Settings → Network → UPnP, and enable UPnP and then click "Apply" button to save.
- Enable the UPnP function in the router.
- Click "Refresh" button to refresh the UPnP status. If the UPnP status were still "Invalid UPnP" after refreshing it for several times, the port would be wrong. Please change the mapping type to "Manual" and then click to modify the port until the UPnP status turns to "valid UPnP".



7. NAT

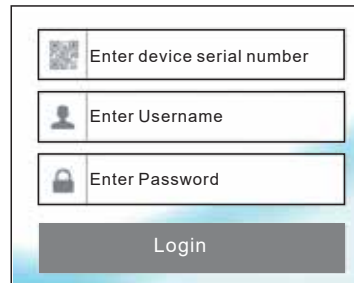
• NAT Setting

- The NVR shall be powered on and connected to the network.
- Go to Start → Settings → Network → TCP/IPV4. You can obtain the IP address, subnet mask and gateway automatically. You can also manually enter them according to the actual network situation. Please make sure the network segment is the same as that of the network which is used.
- Set the preferred or alternative DNS Server. Click "Apply" to save the parameters.
- Go to Start → Settings → Network → NAT tab. Enable NAT and select the NAT Server Address (The default NAT Server Address is nat.autonat.com). Click "Apply" to save the parameters.



• NAT Access

After finishing the NAT settings, you can input www.autonat.com in the IE address bar and then press enter to go to the following interface. If you are the first time to access the NAT, you shall download and install the ActiveX according to the popup tips. After installing ActiveX successfully, it will pop the login box.



Device Serial Number: Click on the menu bar at the bottom of the live interface to check the serial number or go to Start → Settings → Network → Network Status to check the serial number of the DVR).
Username: The username of the NVR. The default username is **admin**.
Password: The password of the NVR. The password is set by yourself when you configure the wizard for the first time.

9. Manual Recording

Before recording, please install and format a HDD. In the live interface you can see the menu toolbar. Click button to start recording. Click it again to stop recording. You can also click to check the status of the recording.



10. Playback

• Instant Playback

Click "Instant Playback" in the right-click menu of the camera's preview window to select or drag the playback progress bar to change the playback time to play back the record.

• General Playback

Click on the tool bar at the bottom of the live preview interface or click Start → Playback to go to the playback interface as shown below. You can also add the playback cameras manually. Click in the playback window to pop up the "Add Camera" window. Check the cameras in the window and then click "Add" to add playback camera. The record files of the added playback camera will be played in the playback interface.

