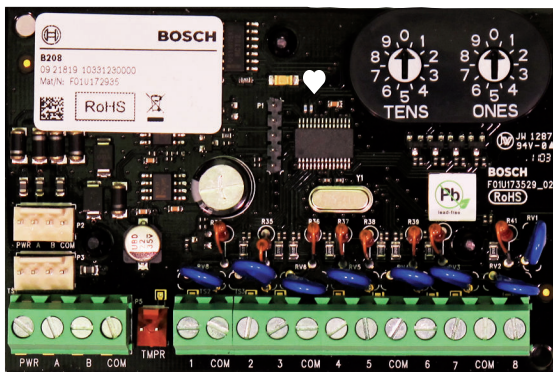


B208 Octo-input Module

www.boschsecurity.com



BOSCH
Invented for life



- ▶ Programmable input point functions
- ▶ Easy to read switch addressing
- ▶ 2 interconnect wiring connectors
- ▶ Provides eight points

The B208 Octo-input Module is an 8 point expansion device that connects to the control panel through the SDI2 bus. This module is fully supervised and communicates back to the control panel all point status changes. The module expansion points operate the same as the points on the control panel. Industrial, commercial, and institutional facilities are typical installations for the B208 module. The B208 connects to the SDI2 bus on the control panel using SDI2 terminals, or using the interconnect cable. You can connect multiple B208 modules to a single control panel. The B208 address switches allow for ease of use in device addressing.

System overview

The B208 Octo-input Module connects to a control panel through the SDI2 bus. This module is supervised and communicates back to the control panel all point status changes. The module's expansion points operate the same as the points on the control panel.

Functions

Loop inputs

The B208 uses up to eight inputs which may be Normally Open (NO), or Normally Closed (NC) with 1k Ω EOL resistor(s) for supervision.

Certifications and approvals

Region	Certification	
USA	UL	
	UL	UL 365 - Police Station Connected Burglar Alarm Units
	UL	UL 609 - Standard for Local Burglar Alarm Units and Systems
	UL	UL 636 - Holdup Alarm Units and Systems
	UL	UL 864 - Standard for Control Units and Accessories for Fire Alarm Systems
	UL	UL 985 - Household Fire Warning System Units
	UL	UL 1023 - Household Burglar Alarm System Units
	UL	UL 1076 - Proprietary Burglar Alarm Units and Systems
	UL	UL 1610 - Central Station Burglar Alarm Units
	FM	FM 3010 - Fire Alarm Signaling Systems
CSFM	see our website	
FCC	Part 15 Class B	

Region	Certification	
	FDNY-CoA	6174
	FDNY-CoA	6196
Canada	ULC	CAN/ULC S303 - Local Burglar Alarm Units and Systems
	ULC	CAN/ULC S304 - Standard for Signal Receiving Center and Premise Burglar Alarm
	ULC	ULC-ORD C1023 - Household Burglar Alarm System Units
	ULC	ULC-ORD C1076 - Proprietary Burglar Alarm Units and Systems
	IC	Industry Canada - ICES-003 - Information Technology Equipment (ITE)

Installation/configuration notes

Wiring considerations

The module to the control panel using the PWR, A, B, COM terminals on the control panel using the screw terminal strip or the interconnect wiring connector. Use 12 AWG to 22 AWG (1.5 mm to 0.6 mm) wires from the module to the control panel.

Parts included

Quantity	Component
1	Octo-input module
1	Hardware pack
1	interconnect cable
1	Literature pack

Technical specifications

Properties

Dimensions	2.5 in x 3.8 in x 0.60 in (6.37 cm x 9.6 cm x 1.5 cm)
------------	--

Environmental considerations

Relative humidity	5% to 93% at +32°C (+90°F)
Temperature (operating)	0°C to +49°C (+32°F to +120°F)

Power requirements

Current	35 mA
Voltage	12 VDC nominal

Wiring

SDI2 wiring	Maximum distance – Wire size (unshielded wire only): 12 in (30.48 cm)
Wiring	Maximum distance – Wire size (unshielded wire only): 1000 ft (305 m) – 22 AWG (0.65 mm) 1000 ft (305 m) – 18 AWG (2 mm) Unshielded wire only

Loop inputs

Loop Inputs	Up to eight inputs. Input contacts may be Normally Open (NO) or Normally Closed (NC) with 1kΩ EOL resistor(s) for supervision. Note: Normally Closed (NC) is not permitted in Fire installations.
-------------	---

Compatibility

For UL 864 compliance, use a UL commercial fire approved control panel.

Control panels	B9512G/B9512G-E (Up to 59 modules) B8512G/B8512G-E (Up to 9 modules) B5512/B5512E (Up to 4 modules) B4512/B4512E (Up to 2 modules) D9412GV4 (Up to 24 modules) D7412GV4 (Up to 7 modules) D7212GV4 (Up to 3 modules)
----------------	--

Ordering information

B208 Octo-input Module

Provides 8 programmable inputs.
Order number **B208**

Represented by:

Americas:

Bosch Security Systems, Inc.
130 Perinton Parkway
Fairport, New York, 14450, USA
Phone: +1 800 289 0096
Fax: +1 585 223 9180
security.sales@us.bosch.com
www.boschsecurity.us

Europe, Middle East, Africa:

Bosch Security Systems B.V.
P.O. Box 80002
5617 BA Eindhoven, The Netherlands
Phone: + 31 40 2577 284
Fax: +31 40 2577 330
emea.securitysystems@bosch.com
www.boschsecurity.com

Asia-Pacific:

Robert Bosch (SEA) Pte Ltd, Security
Systems
11 Bishan Street 21
Singapore 573943
Phone: +65 6571 2808
Fax: +65 6571 2699
apr.securitysystems@bosch.com
www.boschsecurity.asia

China:

Bosch (Shanghai) Security Systems Ltd.
203 Building, No. 333 Fuquan Road
North IBP
Changning District, Shanghai
200335 China
Phone +86 21 22181111
Fax: +86 21 22182398
www.boschsecurity.com.cn

America Latina:

Robert Bosch Ltda Security Systems Division
Via Anhanguera, Km 98
CEP 13065-900
Campinas, Sao Paulo, Brazil
Phone: +55 19 2103 2860
Fax: +55 19 2103 2862
latam.boschsecurity@bosch.com
www.boschsecurity.com