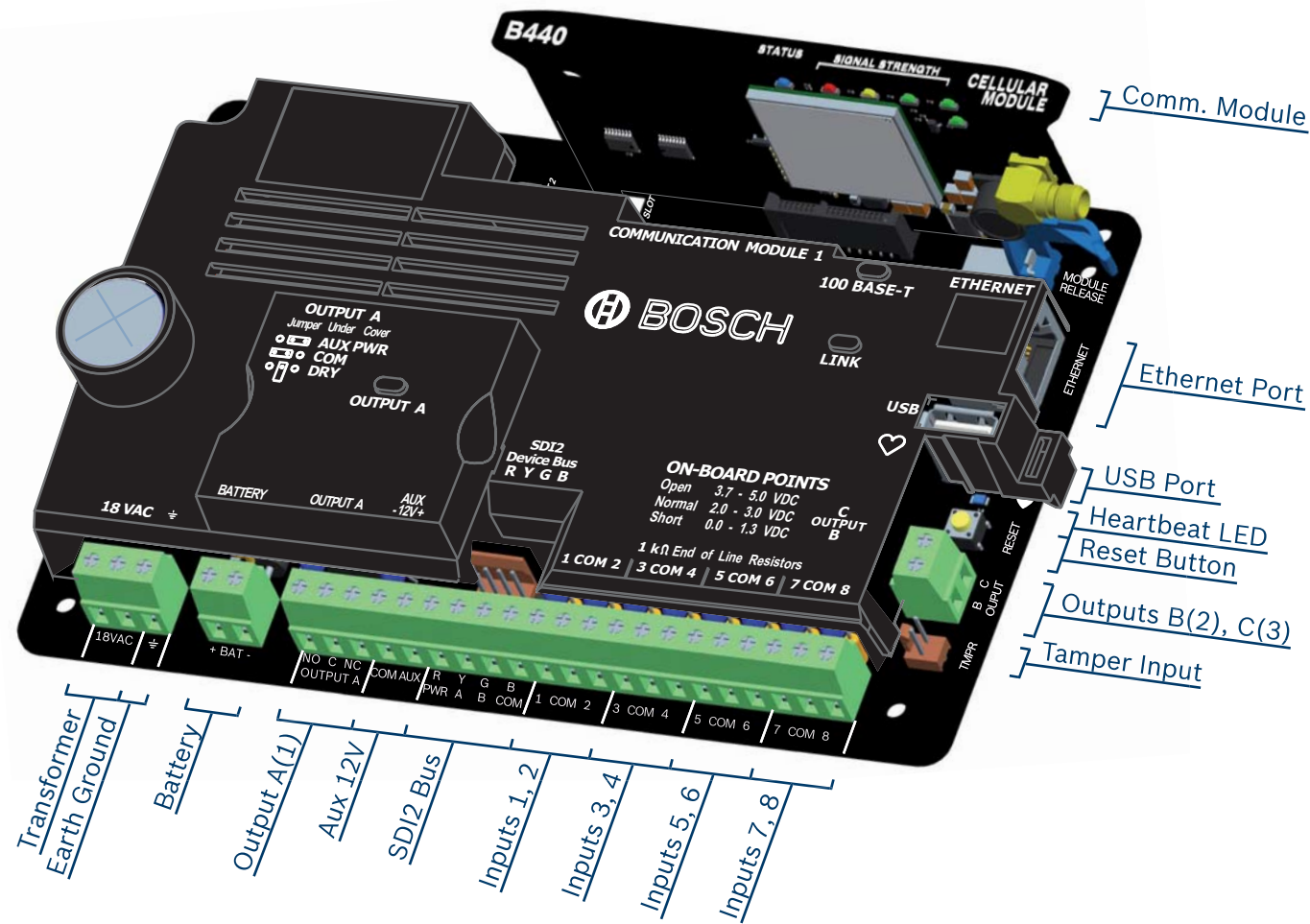


Quick Start Guide

B5512/B4512/B3512 Control Panel



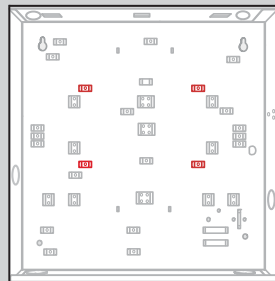
Communication Devices

Technology	Location	ISRG #	Reporting	Personal Notifications	Remote RPS Programming	Local RPS Programming	Remote Security App
Ethernet ³	On-board	7.5	●	●	●	1	●
Cellular	B44x Plug-in	8.2	●	●	●	●	●
Telephone	B430 Plug-in	7	●	○	●	○	○
USB	On-board	3.3.8	○	○	○	2	○

¹ = PC direct, connect using AutoIP (Wi-Fi off, wait 2 min)
² = PC direct, connect using Male A to Male A USB (B99)
³ = 'E' panel variants do not include on-board Ethernet

Control Panel Mounting Locations

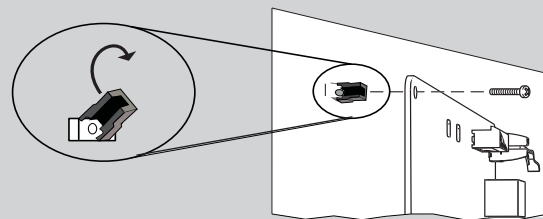
B10 Enclosure



B11 Enclosure



Attaching Mounting Clips



Need more help?
 For detailed instructions, refer to the control panels *Installation and System Reference Guide* (ISRG) chapter number (ISRG #5.2) included on the CD provided with the control panel.

SDI2 Device Type Options

Maximum # of Devices

Device Type	Part #	Description	ISRG #	B5512	B4512	B3512	Address	Notes
Keypad	B915	2-line Basic	9.1.1					Similar device types must use different addresses.
	B920	2-line, LCD	9.1.2					
	B921C/W	2-line, Capacitive	9.1.3	8*	8*	4*	01...08	
	B930	5-line, ATM LCD	9.1.4					
	B942	Touch Screen	9.1.5					
	I/O Expander	B208	8-input	13.1	4	2	0	
B308		8-output	11.1	5	3	0		
RF Receiver	B810	Bosch RADION	14.1				1	* Maximum number of keypads and RF receivers in a single system.
	B820	Inovonics	14.2	1*	1*	1*		
Power Supply	B520	12V DC, 2A	6.3	4	2	2	01...04	
Remote Cellular	B450	B44x Plug-in Interface	8.4	1	1	1	1	

SDI2 Specifications

- Unshielded, 4 conductor, 22-12 gauge cable
- Maximum cable length 1000' single run, 7500' system total
- Allows a combination of home run, daisy chain and T-tapping wiring configurations

On-board Inputs and Outputs

Terminal	Description	Specification
18VAC	Transformer	18VAC 22VA Plug-in
	Earth Ground	Cold water pipe, or similar
+ BAT -	Battery	12VDC 7Ah
NO C NC	Output A(1)	Switched AUX, COM, or Dry
COM AUX	Aux Power	12VDC, 800mA
R Y G B	SDI2 Bus	Keypads, SDI2 devices, terminal and Quickconnect in parallel
1 COM 2	Alarm Inputs	1k Ω EOL
TMPR	Tamper	Optional tamper switch
B C	Outputs B(2), C(3)	Open collector, 50mA, active low
RESET	Reset Switch	Hold 5 seconds to enter or exit service mode
	Heartbeat	Slow=normal, Rapid=service mode
MODULE 1	Plug-in	Communication module options

RPS Programming

Remote Programming Software (RPS)

- Windows based account management and control panel programming application
- Each control panel program is represented as an RPS database record

RPS Features

- Full control panel configuration; local and remote
- Control panel firmware updates; local and remote
- Control panel history event management and reports
- Enhanced remote panel diagnostics

RPS Ordering Information

- D5500CU: RPS Account management and control panel programming software on CD-ROM
- D5370-USB: USB Security Block (Dongle) Security accessory required for RPS to control panel communications
- D5500C-USB: RPS software and required USB Security Block (Dongle) kit



USB Security Block

RPS Software Download: <http://tiny.cc/boschrps>

Note: RPS version 5.17 or higher is required for connection to B Series control panels.

RPS Installation and Initial Login

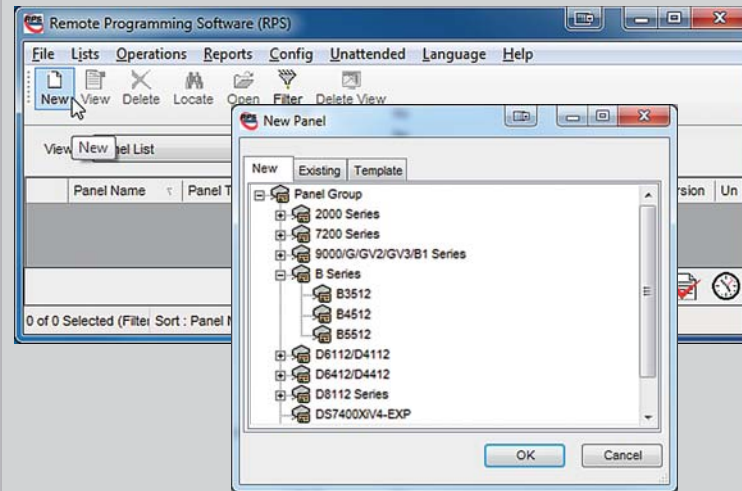
- Install RPS on a Windows computer
- Login to RPS using the following credentials
 - User Name: admin
 - Password: default
- Change the password after initial login

RPS Help

Press F1 for context sensitive help from any window or programming field within the RPS application.

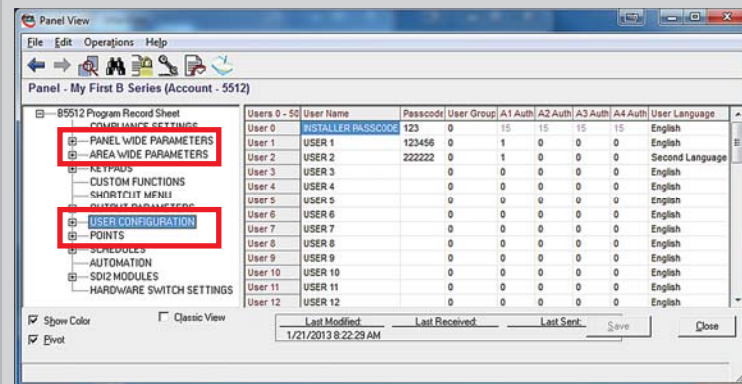
Creating B Series Accounts

1. Panel List > New.
2. Select a B Series control panel.
3. Enter the account information in the fields.



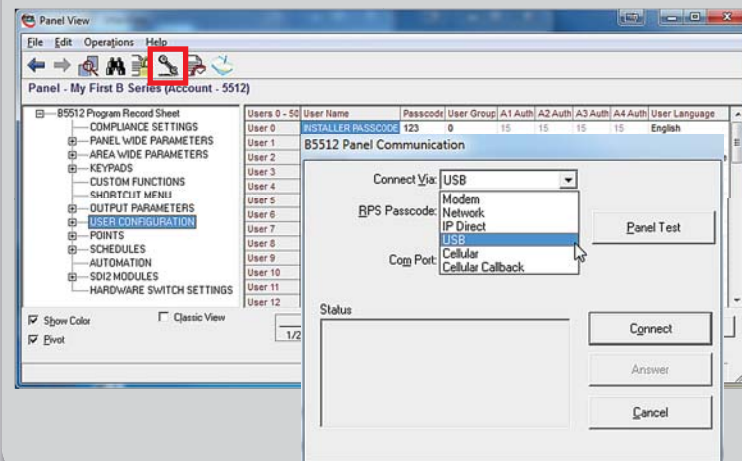
B Series Control Panel Configuration

1. To open, double-click the B Series account.
2. Complete the required basic control panel parameters.



Connecting to B Series Control Panels

1. Plug in the Security Block.
2. Click the Connect button.
3. Select the connection method.
4. Connect to the control panel.
5. Send All programming parameters to the control panel.



Keypad Programming

B930 ATM Style Alphanumeric Keypad Features:

- Bright five-line display
- Four ATM style soft-keys on both sides of the display



B920 Series Two-line Alphanumeric Keypad Features:

- Bright two line display
- Eight dedicated function keys



B Series Keypad Functions

- System operation (User)
- System diagnostics (Installer)
- Basic Panel Programming (Installer)

Installer Mode

- Installer Mode provides basic programming and diagnostics at system keypads.
- Installer Mode tools include:
 - Programming
 - Service Bypass
 - Wireless
 - Versions
 - Network
 - Cellular
- Enter Installer Mode by entering the default installer passcode: [1][2][3][ENTER].
- Exit Installer Mode by pressing [ESC].

Service Mode

- Service Mode differs from Installer Mode by:
 - Stopping all reporting
 - Enabling a service keypad (address 0,0)
 - Rebooting control panel when mode is exited
- Entering Service Mode:
 1. Hold the control panel's RESET button for 5 seconds (Heartbeat LED pulses rapidly).
 2. Press [1][2][3][ENTER].
- Exiting Service Mode:
 - Hold the control panel's RESET button for 5 seconds (Heartbeat LED stops and the control panel reboots).

Keypad Programming

Programming needed to make a system operational includes reporting and point programming.

Point Programming Process

1. Enter the Points Menu.
2. Select a Point Number.
3. Set the Point Source.
4. Assign a Point Index.

Point Source: Identifies the source (device type) of the point being programmed.

If the source selected is Wireless an RFID option is presented. Wireless RFID numbers are found on the wireless device being added.

Point Index: Device (point) behavior characteristics assigned to each point in the system.

Twenty Point Indexes are provided including the following common device functions:

- 4 – Smoke Detectors
- 7 – Perimeter Door/Window, no Entry
- 8 – Perimeter Entry/Exit Door
- 13 – Interior Motion Detector

Important Notes:

- Change the default ([1][2][3]) installer passcode
- Test system via Main Menu > Actions > Test menu
- Central Station receiver update is required when using Conettix IP and Modem4 reporting format

Need help? Press the keypad HELP key.