



eBridge200WPM

eBridge
PLUS

Overview

eBridge200WPM PoE Ethernet transceiver/media converter transmits data and power over Coax or CAT5 cable over distances that are 3 to 5 times greater than standard Ethernet. Upgrading existing Coax analog camera infrastructure to IP cameras is greatly simplified as well. eBridge200WPM can support up to two PoE or PoE+ cameras/devices or a single Hi-PoE (60W) device. The eBridge200WPM/WPMH offers built-in IP management which allows for remote camera reset, monitoring and reporting via various IP protocols. There is no need to install remote AC mains power, since these devices are simply powered from the low voltage PoE midspan/endspan equipment, such as Altronix NetWay midspans or eBridge100SPR.

Specifications

Input Options:

- 30W: Midspan or Endspan; Pace1PRM, 4PRM, 8PRM or 16PRM; eBridge100RM, 400PCRM, 800PCRM or 1600PCRM.
- 60W: Pace1PRM, eBridge100SPR, or NetWay1D.

Power Output:

- 2 ports PoE+ (30W) per port or 1 port Hi-PoE (60W).
- Total output power: 60W.

Ethernet:

- Link Distance: 500m max. (with Pace or eBridge100 series PoE receivers to eBridge200WPM) or 100m (with standard midspan or endspan to eBridge200WPM).
- Connectivity: RJ45, auto-crossover.
- Wire type: 4-pair CAT5 or better structured cable.
- Device Distance: 100m max. (eBridge200WPM to camera/device).
- Speed: 100BaseT, full duplex, auto negotiation.

Coax:

- Link Distance: 300m max.
- Connectivity: BNC, RG-59/U or similar.
- Speed: 100BaseT, full duplex, auto negotiation.

LED Indicators:

- Speed and Activity of Output ports.
- PoE ON the Spare Pair of CAT5
- PoE ON the Data Pair of CAT5.

Environmental:

- Operating Temperature:
60W over CAT5 -40°F to 167°F (-40°C to +75°C).
60W over Coax -40°F to 149°F (-40°C to +65°C).
45W over Coax -40°F to 167°F (-40°C to +75°C).
- Storage Temperature: -40° to 167°F (-40° to +75°C).
- Relative Humidity: 20 to 85%, non-condensing.
- Operating Altitude: -1000 to 6,561.679 ft. (-304.8 to 2000m).

Applications:

- Long range outdoor CAT5 or Coax PoE/PoE+/Hi-PoE.
- Retrofit digital IP cameras in an analog CCTV installation (up to two (2) IP cameras expansion per analog camera).
- Works with Megapixel, HD720, HD1080 and VGA (SD) cameras.
- Upgrade deployed CCTV Coax to a digital network in Retail, Hospitality, Arenas, Casinos, Airports, Schools, Hospitals, Transportation, etc.

Mechanical:

- NEMA 4X, IP66 Rated enclosure for outdoor use.
- Dimensions (H x W x D approx.):
9.5" x 7.32" x 4.92" (241.3mm x 185.9mm x 125mm).
- Product weight (approx.): 2.2 lbs. (1.0 kg).
- Shipping weight (approx.): 3.2 lbs. (1.45 kg).

Models:

eBridge200WPM: Outdoor Managed Two Port Transceiver.

eBridge200WPMH: Outdoor Managed Two Port Transceiver, enclosure with three (3) 5/8" wiring inlets, includes NEMA rated glands.

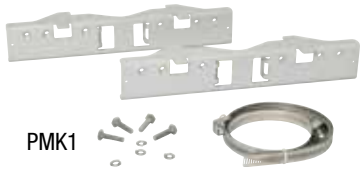
Agency Approvals



UL/CUL Listed for Information
Technology Equipment (UL 60950-1).



European Conformity



PMK1

PMK1 Pole Mount Kit (order separately)

PMK1 pole mount kit is designed to simplify installation of outdoor units.

- Accommodates 2”- 8” (diameter) poles.
- Kit includes:
 - Two (2) powder coated steel mount brackets.
 - Four (4) stainless steel bolts.
 - Four (4) stainless steel lock washers.
 - Two (2) wormgear quick release straps.

Enclosure Dimensions (H x W x D approximate):

9.5” x 7.32” x 4.92” (241.3mm x 185.9mm x 125mm)

