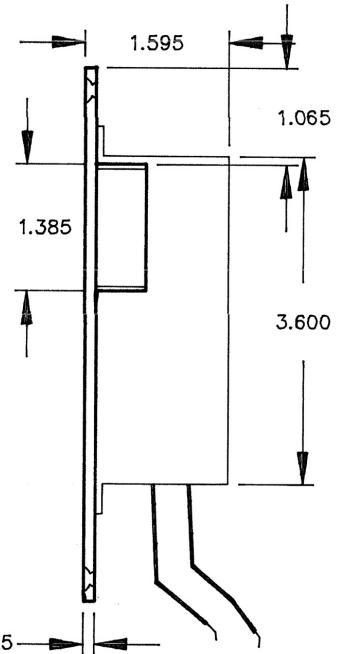
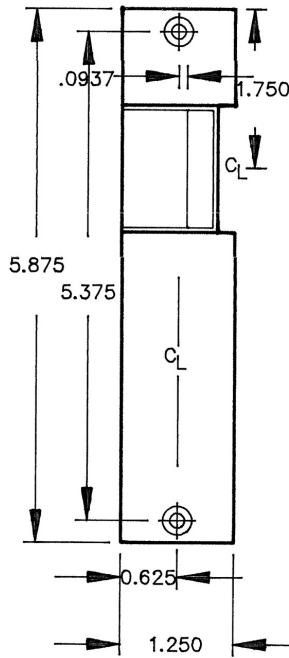
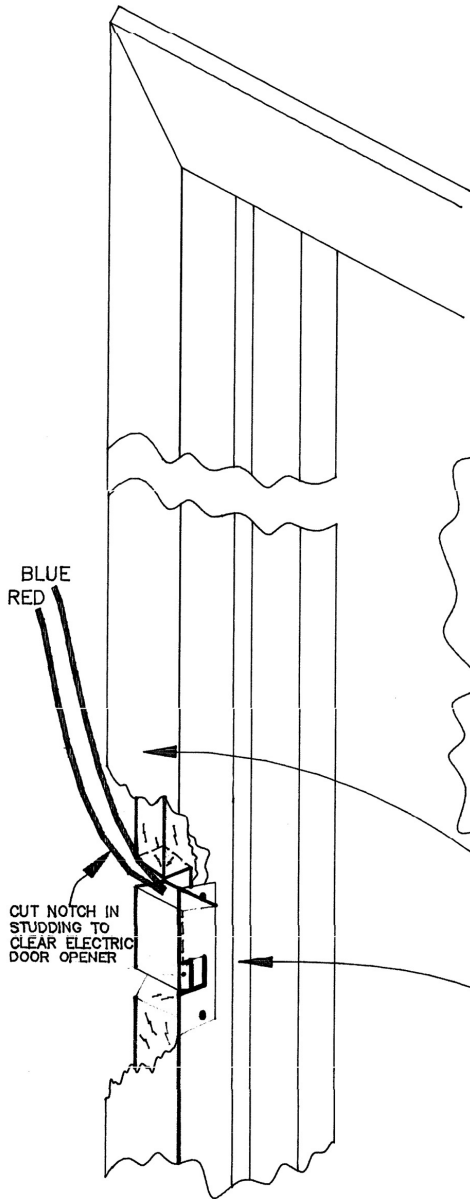


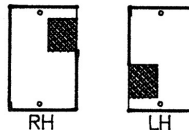
TYPICAL INSTALLATION INSTRUCTION

ELECTRIC DOOR RELEASE

(Installation shown for DRW and VDR
only for illustration purposes.)



REVERSIBLE FOR USE WITH
LEFT OR RIGHT HAND DOORS



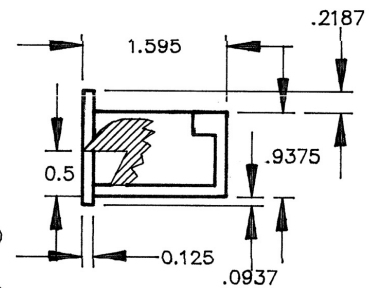
DOOR OPENING INWARD VIEWED
OUTSIDE LOOKING IN
BE SURE TO MAKE CUT IN DOOR FRAME
FOR RIGHT OR LEFT HAND DOOR.

(ROUGH-IN)

RUN 2 COND. CABLE (BLUE & RED) FROM
MASTER UNIT TO DOOR OPENER AND
SECURE TO WALL STUD AT CUTOUT.

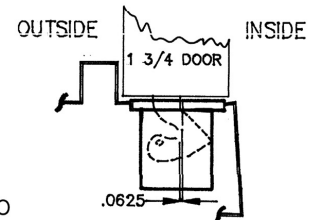
(TRIM-OUT)

LOCATE DOOR OPENER IN POSITION ON DOOR
JAM SO THAT LATCH BOLT OF DOOR LOCK
RECESSES PROPERLY IN LATCH OPENING OF
DOOR OPENER.
CONNECT BLUE & RED WIRES FROM MASTER TO
THE TWO WIRES ON DOOR OPENER.(NO COLOR
MATCH IS REQUIRED ON DRW AND DRM BUT
OBSERVE POLARITY ON VDR) MORTISE DOOR
JAM AND MOUNT OPENER FLUSH WITH JAM.



TYPICAL INSTALLATION DETAIL

1 3/4" DOOR, 2" DOOR JAM



* WHEN INSTALLING ON DOORS EQUIPPED WITH METAL JAMS USE DOOR OPENER MODEL "DRM" AVAILABLE FROM OUR FACTORY. MODEL VDR FOR USE WITH JHV400 MODEL VIDEO DOOR MONITOR, SEE CONNECTIONS OUTLINED IN JHV400 MANUAL.

M&S SYSTEMS
1-800-421-1587
www.mssystems.com