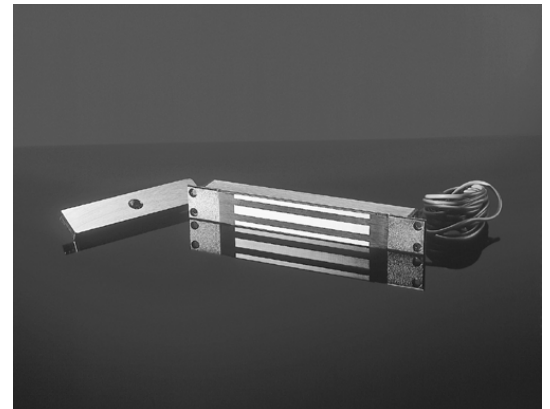


MODEL	A	B	C	MODEL	A	B	C	D	E	F
M34R MAGNET	10.55	1.5	1.125	M34R STRIKE	6.4	1.45	0.438	0.95	2.25	0.725
NOTE: FASTENERS NOT SHOWN-ALL DIMENSIONS IN INCHES.										

ELECTROMAGNETIC LOCK – Model 34R

Features

- 600 pounds of pull-apart holding force
- Lifetime replacement warranty
- Power consumption of 320mA @ 12VDC & 170mA @ 24VDC-4 Watts
- Automatic dual voltage, 12 VDC or 24 VDC, no field adjustment required
- Instant release circuit, no residual magnetism
- Recessed for aesthetically appealing finish
- Fully sealed electronics, tamper proof & weather proof
- Architectural brushed stainless steel finish
- Ten feet of jacketed stranded conductor
- Lock and strikes plated to provide corrosion resistance
- Also available in Bondstat model
- Fail Safe
- UL listed



Options

- Bondstat Form 'C' – Instantaneous lock status sending without the use of auxiliary switches or reed relays
- DPS Door Status – Integrated door reed switch w/ built in resettable polyswitch

ELECTROMAGNETIC LOCK – Model 34R (cont'd)

Operating Temperature
-40 to 60C [-40 to 140F]

How to Order

<u>Part Number</u>	<u>Product Description</u>
M34R	Maglock Model 34R, Dual Voltage, Recessed
M34RB	Maglock Model 34R, Dual Voltage, Recessed, Bondstat
M34RD	Maglock Model 34R, Dual Voltage, Recessed, Door Position
M34RBD	Maglock Model 34R, Dual Voltage, Recessed, Bondstat, Door Position

ARCHITECTURAL SPECIFICATION – Electromagnetic Lock Model 34R

2.x MAGNETIC LOCKS

- A. All electromagnetic locks shall be manufactured by Securitron Maglock Corp., Sparks, NV, an ISO 9001 certified manufacturer.
- B. Locks shall be capable of providing a pull-apart or tensile holding force of at least 600 pounds. A laboratory test certifying the minimum holding force shall be submitted by the manufacturer upon request.
- C. Electromagnetic locks shall have a lifetime replacement warranty.
- D. Locks shall be dual voltage with no field adjustment necessary to select voltage.
- E. Locks shall not consume more than four and one-half (4.5W) watts of power (320 mA @ 12VDC) and (170mA @ 24VDC).
- F. Locks shall be fully sealed in resin to provide tamper and weather proofing.
- G. Mount strike plates to provide a "floating" movement to assure automatic self-alignment with the lock.
- H. Finish is architectural brushed stainless steel.
- I. Ten feet of jacketed stranded conductor shall be provided for electrical connection.